

Pulse Transformer



Features :

Designed to comply with the following requirements as defined by

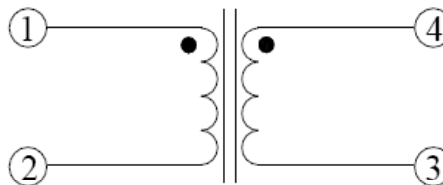
IEC60950-1,EN60950-1,UL60950-1/CSA60950-1 and AS/NZS60950.1:

- Supplementary insulation for a primary circuit at a working voltage of 250Vrms.

A) Electrical Specifications @ 25°C --- Operating temperature -40°C To +85°C .

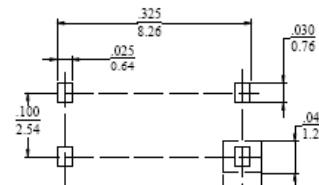
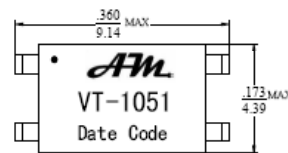
Part Number	Turns Ratio (1-2):(4-3)	Inductance(1-2) (10KHz, 0.1V)	DCR (1-2)	DCR (4-3)	Hi - Pot (0.5mA,1Sec)
VT-1051	1 : 1.67 ± 2%	35 uH Min.	0.35Ω Max.	0.35Ω Max.	3750Vac
VT-1051-1	1 : 1.67 ± 2%	35 uH Min.	0.35Ω Max.	0.35Ω Max.	3750Vac

B) Schematics

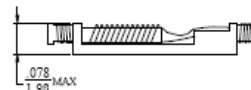
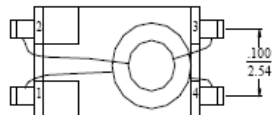


C) Mechanical Dimensions (Unit: inches / mm)

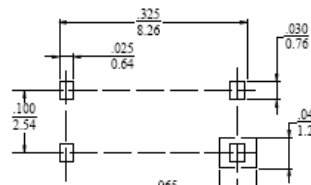
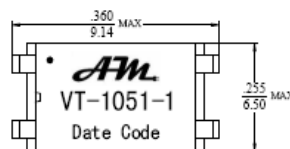
VT-1051 →



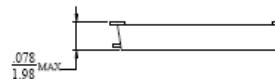
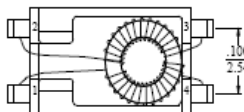
Suggested PCB Layout



VT-1051-1 →



Suggested PCB Layout



Unless otherwise specified, all tolerances are ±.010 / 0.25

AlphaMag Electronics, Inc

Ph: (573) 364-2422 Fx: (573) 364-5390

www.alfamag.com